

Roadmap: SUSS Experiential Graduation Requirements

This roadmap serves as a guide on the steps that must be taken to fulfil the respective requirements. Each requirement can be completed in no particular order, unless otherwise stated. You may approach the respective offices for a consultation for any further enquiries.



STUDENT TEAMBUILDING

YEAR ONE

YEAR TWO

YEAR THREE

YEAR FOUR

COMMUNITY ENGAGEMENT (CE)

WORK ATTACHMENT (WA)

OVERSEAS EXPERIENCE (OE)

YOUR E-PORTFOLIO

FILE FOR GRADUATION

You must complete and pass all experiential graduation requirements to obtain the full-time degree. All required submissions should be submitted at least 6 months prior to graduation.

YOUR LIFELONG E-PORTFOLIO

STUDENT TEAMBUILDING

Kick-start your university journey together through a common experience

- Select a run via the Student Teambuilding Registration Portal
- Submit travel documents & health declaration
- Enroll, participate and pass the Experiential Teambuilding (ETB) course
- Complete within the first academic year

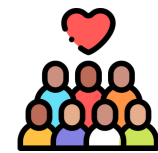


Office of Student Life (OST)
suss.edu.sg/ost | ost@suss.edu.sg

COMMUNITY ENGAGEMENT (CE)

Develop your sense of social responsibility to contribute meaningfully to society

- Complete and pass CE100 module on Canvas
- Refer to Canvas for instructions on how to submit CE proposal with the agreed scope of work with Community Partner to OSLCE before starting the CE
- Submit Closure Report and Self & Mentor Evaluation to OSLCE at the end of the CE
- Upload your CE Portfolio via Portfolium



Office of Service Learning & Community Engagement (OSLCE)
suss.edu.sg/oslce | osl@suss.edu.sg

WORK ATTACHMENT (WA)

Make connections between academic studies and the realities of the working world

- Fulfil programme pre-requisite*
- (Pre-WA quiz, RAMS, relevant CPS courses)
- Complete minimum 24 weeks of full-time work attachment locally, overseas or virtually
- Complete required CPS assignments and required assessments
- Encouraged to self-source for WA and must seek approval for job description by respective mentors before commencing
- WA will only commence from Year 2 onwards



* Different majors may be subjected to different Academic Pre-requisites
CPS – Career Preparation Series | WA – Work Attachment |
RAMS – Risk Assessment and Management System

Career Development Office (CDO)
suss.edu.sg/cdo | careerdev@suss.edu.sg

OVERSEAS EXPERIENCE (OE)

Enhance your global competencies during your university journey

- Submit post-programme OE insights to showcase your global learning and insights via Portfolium
- Recommended to be fulfilled by Year 3



Office of Global Programmes (OGP)
suss.edu.sg/ogp | ogp@suss.edu.sg

YOUR E-PORTFOLIO

Showcase your achievements, skills, reflections and personal growth

- A lifelong e-portfolio account is created for you via Portfolium
- Document and showcase your SUSS learning journey from Year 1
- Network with SUSS community and enhance your CV via Portfolium
- Visit suss.edu.sg/e-portfolio for assessment requirements



Office of Student Life (OST)
suss.edu.sg/ost | ost@suss.edu.sg

Guide to SUSS Experiential Graduation Requirements

Here are the various options available for you to fulfil each requirement. Each requirement can be completed in no particular order, unless otherwise stated. You may approach the respective offices for a consultation for any further enquiries.

STUDENT TEAMBUILDING

Experiential Teambuilding (ETB) is a credit-bearing course that provides an experiential platform for all full-time students to kick-start the university journey through a common experience.

This module must be completed within the first academic year.

Office of Student-Life (OST)
suss.edu.sg/ost | ost@suss.edu.sg

COMMUNITY ENGAGEMENT (CE)

1. Community Service-Learning (CSL)

Local Service-Learning projects curated by OSLCE that focuses on learning and committing to the community

2. Community Engaged Project (CEP)

Sustained initiative/participation in projects that engage the community, create social impact, and/or address social issues

3. Community Engaged Work (CEW)

- a. Work Attachment 
- b. Internship

Full-Time or Part-Time work with non-profit organisations, community agencies or social enterprises

4. Social Entrepreneurship (SE)

Setting up of social enterprises by students

Business has to be registered and active for a minimum of 6 months to fulfill WA

5. Global Service-Learning (GSL)

a. Overseas Community Engaged Work

- i. Work Attachment
- ii. Internship

Full-Time or Part-Time work with non-profit, community agency or social enterprise

b. Youth Expedition Project

i. Non-credit bearing (YEP)

Students lead/participate in a S-L project in a country approved by NYC and endorsed by SUSS

ii. Credit bearing (OEL-YEP)

Students lead/participate in overseas experiential learning (OEL) courses with YEP component (see above)

c. S-L Experience

Offered by approved overseas partner institutions

d. Reciprocal Global Service-Learning

A two-part S-L project in collaboration with peers from partner universities overseas, both in Singapore and overseas

6. Community Engaged Course (CEC)

Approved credit-bearing courses that serve a community according to their needs

7. Community Engaged Applied Research (CEAR)

Approved applied research projects that involve the community

Office of Service-Learning & Community Engagement (OSLCE)
suss.edu.sg/oslce | osl@suss.edu.sg

OVERSEAS EXPERIENCE (OE)

1. Overseas Experiential Learning (OEL)

Credit-bearing courses curated to highlight learning in a specific theme, designed to deepen understanding about the sociocultural, political, economic developments in emerging markets and local industries through seminars and an overseas field-trip

2. Overseas Summer School & Winter School (OSS/OWS)

Academic courses at pre-approved universities during vacation periods, credit recognition/transfer possible

3. Industry-based Study Programmes (IBSP)

Industry-specific programmes designed in collaboration with industry partners at an overseas destination, typically credit-bearing

4. Semester Exchange (during term-time)

Credit-bearing semester-long academic exchange programme with partner universities

5. Summer/Winter Programmes for Global Learning

Non-credit bearing programmes on Social Innovation and Cultural Immersion

For programme #1 - #5: Office of Global Programmes (OGP)

suss.edu.sg/ogp | ogp@suss.edu.sg

6. Adventure Leadership Programmes (ALP)

The overseas ALP are typically credit-bearing, targeting students who seek personal growth in areas such as resilience, teamwork, leadership and environmental-mindedness

7. Active Citizenship Programmes

A platform to deepen students' knowledge and broaden their perspectives on a variety of current global issues through active interactions with fellow youths and experts from around the world

For programme #6 - #7: Office of Student-Life (OST)

suss.edu.sg/ost | ost@suss.edu.sg

8. Entrepreneurship Programme - Impact Startup Challenge (ISC)

Learn how to startup in 6 days at an overseas startup hub. Students will form teams with international students, learn about the Lean Startup method and pitch their idea to investors

For programme #8: Entrepreneurship Programmes
suss.edu.sg/experience-at-suss/entrepreneurship
entrepreneurship@suss.edu.sg

WORK ATTACHMENT (WA)

1. Work Attachment

- a. Local
- b. Virtual 

Complete 24 weeks or more in a full-time work role in your major-related field or seek consultation with CDO for cross-disciplinary scope

2. Entrepreneurial Work Attachment

Run your business for 6 months or beyond

Visit the Career Development Portal for Work Attachment/Internship opportunities!

Career Development Office (CDO)
suss.edu.sg/cdo | careerdev@suss.edu.sg

YOUR E-PORTFOLIO!

Showcase your SUSS learning journey on your lifelong Portfolium account

Office of Student-Life (OST)
suss.edu.sg/ost | ost@suss.edu.sg

LEGEND:



STUDENT TEAMBUILDING



COMMUNITY ENGAGEMENT



OVERSEAS EXPERIENCE



WORK ATTACHMENT



E-PORTFOLIO

Fulfil Student Teambuilding, CE, OE, WA and E-portfolio, with submission of assignments and documents as required by respective office